



# Which **Social Enterprises** accept the use of **Consumption Vouchers?**

HKCSS 社聯

SEBC  
Innovate · Invest · Incubate



[In no particular order]

## Food and Beverage

- Cafe 21
- cafe330 (Caritas Medical Centre)
- cafe330 (CUHK)
- cafe330 (HKU)
- cafe330 (Kwong Wah Hospital)
- cafe330 (Prince of Wales Hospital)
- Cheers Café Education Bureau Education Service Centre
- Cheers Café North District Hospital
- Chumrest Limited
- Day Day Goods
- Delicious Express
- Dignity Kitchen
- Festyle
- Gingko Moment
- Haven of Hope Hospital Staff Canteen
- iBakery
- iBakery (Sheung Wan)
- iBakery Gallery Café
- iBakery Pop Up Store
- iBakery Café (Wan Chai)
- inno330
- Lily Vale Café
- O'Veggie
- so330
- SoBakery
- T.Cafe
- Tai Kok Tsui Mrs Mc
- Take A Break Catering Service
- U Deli (EdUHK)
- U Deli HKU
- Viet Street (Yau Ma Tei)
- YMCA Tuck Shop (HKBU)

## Massage, Treatment and Acupuncture

- The Rivulet (Chi Lok Fa Yuen Shop)
- The Rivulet (San Hui Branch)

## Green Product/ Eco Workshop

- Eco-Greenergy
- Grow Something
- Run 2 Tree Studio

## Travel and Guided Tour

- Ho Ho Go Experience
- Walk In Hong Kong

## Education and Training

- Lov Lov Coffee
- yNOTplay Play Therapy

Octopus

\*Social enterprises that accept Octopus payment are including but not limited to the units listed above

#Please contact the social enterprises for getting more details before using the consumption vouchers





# Which **Social Enterprises** accept the use of **Consumption Vouchers?**



[In no particular order]

## Lifestyle

- "Cheers Coop Plus" (Immigration Tower)
- Agent of Change Company Ltd.
- Breakthrough Gallery (Jordan Shop)
- Cheers Coop (Causeway Bay)
- Cheers Coop (Revenue Tower)
- Craving Good
- Crossroads Global Handicrafts
- FAIR CIRCLE (Fortress Hill Shop)
- FAIR CIRCLE (Jordan Shop)
- FAIR CIRCLE (Office, Showroom & Warehouse)
- FAIR CIRCLE (Sha Tin Shop)
- FAIR CIRCLE (Tsuen Wan Shop)
- FAIR CIRCLE @ Citistore (Tsuen Wan)
- Family Store (Aberdeen)
- Family Store (Chai Wan)
- Family Store (Kwun Tong)
- Family Store (Nam Cheong)
- Family Store (North Point)
- Family Store (Prince Edward)
- Family Store (Sai Wan Ho)
- Family Store (Tin Hau)
- Family Store (To Kwa Wan)
- Family Store (Tsuen Wan)
- Family Store (Wan Chai)
- Family Store (Western District)
- Family Store (Whampoa)
- Family Store (Yau Ma Tei)
- farmfresh330 (Queensway)
- farmfresh330 (Tai Wai)
- farmfresh330 (Tuen Mun)
- FruitsMaMa
- Good Family
- Good Goods
- Ground Works

# Octopus

\*Social enterprises that accept Octopus payment are including but not limited to the units listed above

#Please contact the social enterprises for getting more details before using the consumption vouchers





# Which **Social Enterprises** accept the use of **Consumption Vouchers?**



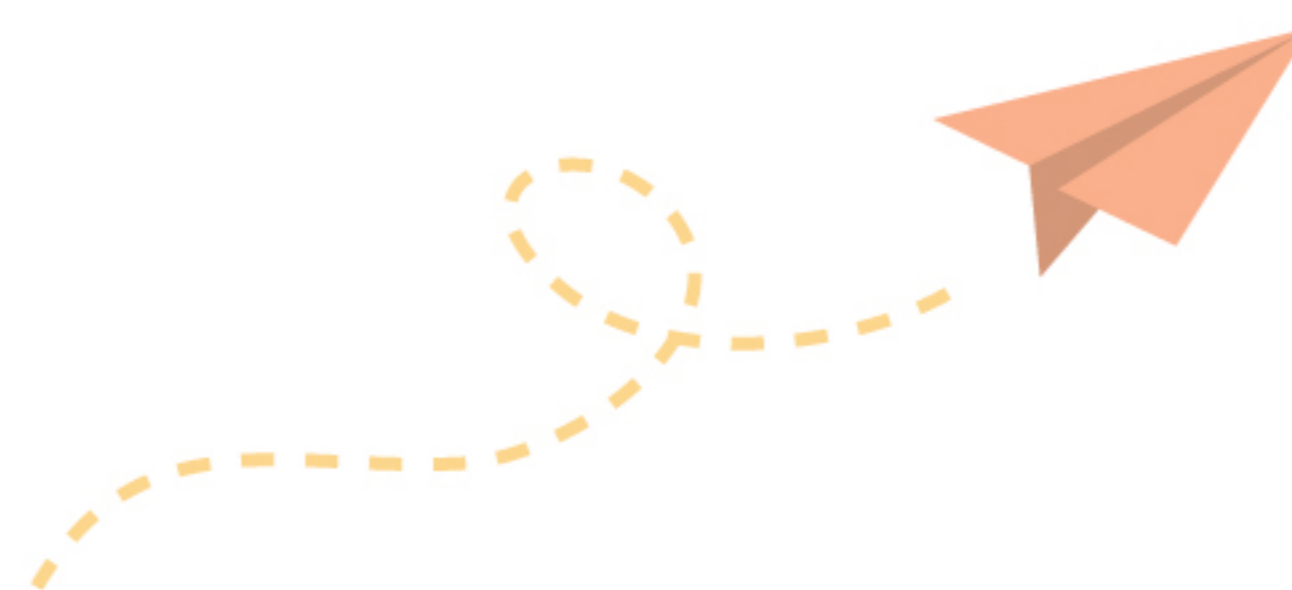
[In no particular order]

## Lifestyle

- Home Market (Choi Hung Estate Shop)
- Home Market (Kowloon City Shop)
- Home Market (Kwai Shing East Shop)
- Home Market (Kwun Tong Shop)
- Home Market (Ngau Tau Kok Shop)
- Home Market (Sham Shui Po Shop)
- Home Market (Shatin Shop)
- Home Market (Shau Kei Wan Shop)
- Home Market (Tai Po Shop)
- Home Market (Tin Shui Wai Shop)
- Home Market (To Kwa Wan Shop)
- Home Market (Tsuen Wan Shop)
- Logos Book House (Causeway Bay)
- Logos Book House (Mongkok)
- New Life Convenience Store (Rehabilitation Building, Kowloon Hospital)
- New Life Convenience Store (West Wing, Kowloon Hospital)
- Restore
- Rice Pro Essential
- Sheung Shui Community Sales Outlet
- SIU VISION SIU RICE
- Smiling HeART
- WEDO GLOBAL Ltd.
- Yuen Long Community Sales Outlet

## Others

- Dream Impact [Event Management]
- Longevity Design House [Interior Design]
- Salon Go Ahead Ltd. [Personal Care]







# Which **Social Enterprises** accept the use of **Consumption Vouchers?**



[In no particular order]

## Health Care Product

- "Cheers Gallery" Kwong Wah Hospital Rehab Links
- "Cheers Gallery" Lai King Building Convenience Store
- "Cheers Gallery" Pok Oi Hospital Rehab Shop
- "Cheers Gallery" Princess Margaret Hospital Rehab Link
- "Cheers Gallery" PYNEH Hospital Rehab Shop
- "Cheers Gallery" Rehab Links at Hennessy Road
- "Cheers Gallery" Rehab Links at Hip Wo Street
- "Cheers Gallery" Rehab Links at Market Street
- "Cheers Gallery" Rehab Links at Nan King Street
- "Cheers Gallery" Rehab Links at Queen's Road Central
- "Cheers Gallery" Rehab Links at Waterloo Road
- "Cheers Gallery" Rehab Links at Nam On Street
- "Cheers Gallery" Tai Po Hospital Convenience Store
- Cheers Gallery Caritas Medical Centre Rehab Links
- Cheers Gallery North District Hospital 24 Hours Convenience Store
- Cheers Gallery Prince of Wales Hospital Convenience Store
- Cheers Gallery Ruttonjee Hospital Convenience Store
- Cheers Gallery Tseung Kwan O Hospital Rehab Shop
- Cheers Gallery Tuen Mun Hospital Rehab Shop
- Haven of Hope Convenience Store
- Healthy Living Shop For Senior Citizen (Tuen Mun)
- HOHOLIFE
- Livesmart Organic & Health Food Shop
- Livesmart Rehab Shop (DSC)
- Livesmart Rehab Shop (KH)
- Livesmart Rehab Shop (LCU)
- Livesmart Rehab Shop (QE)
- Livesmart Rehab Shop (TSW)
- The Project Futurus



# Octopus

\*Social enterprises that accept Octopus payment are including but not limited to the units listed above

#Please contact the social enterprises for getting more details before using the consumption vouchers