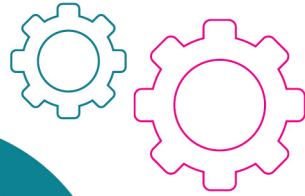


# SE Directory 2021/22

## SE Figure



Social Enterprise Business Centre (SEBC) compiles the Social Enterprise Directory (SE Directory) every year since 2007.

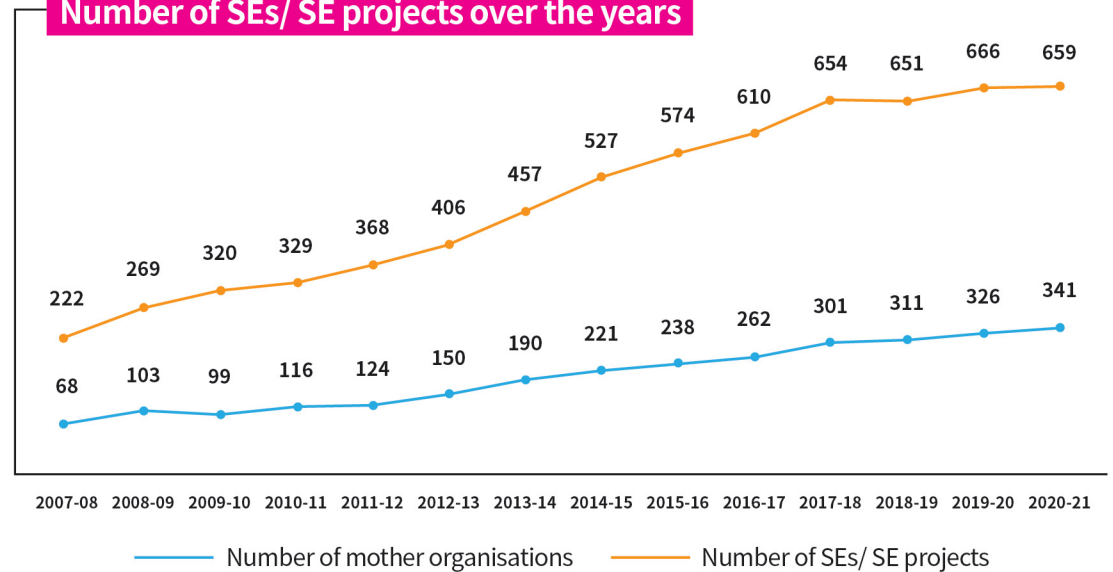
SE Directory has long been serving as an important reference material for advocating responsible consumption across government departments, public organisations, NGOs, corporations as well as schools.



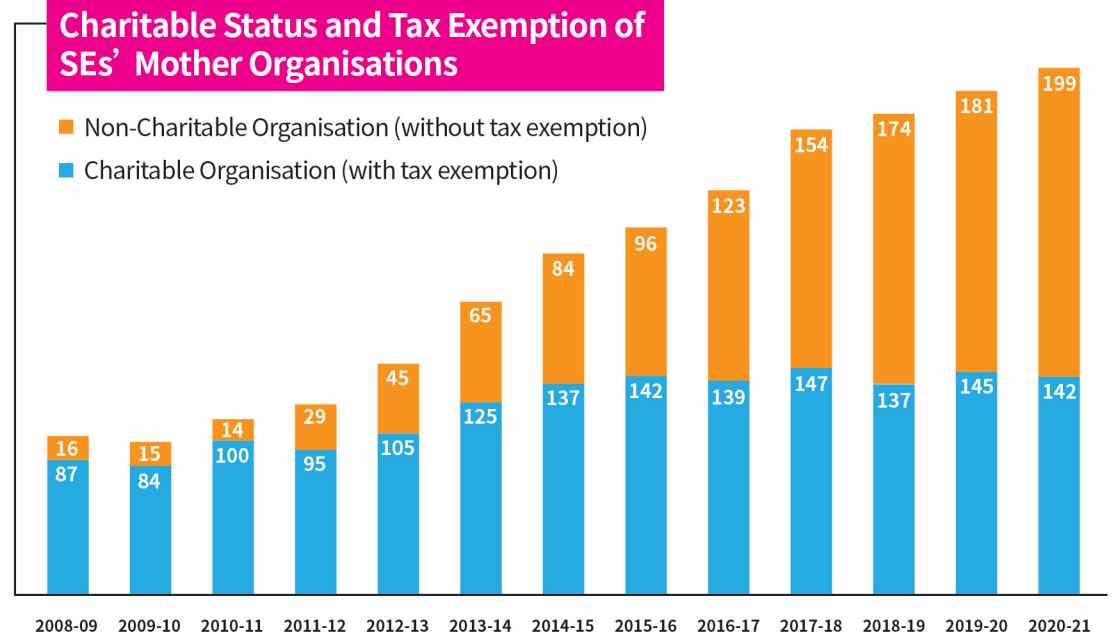
As of April of 2021, there were 659 social enterprise (SE) units, reflecting a 1.1% decrease from the previous year.

## Summary of SE Directory over the years

### Number of SEs/ SE projects over the years

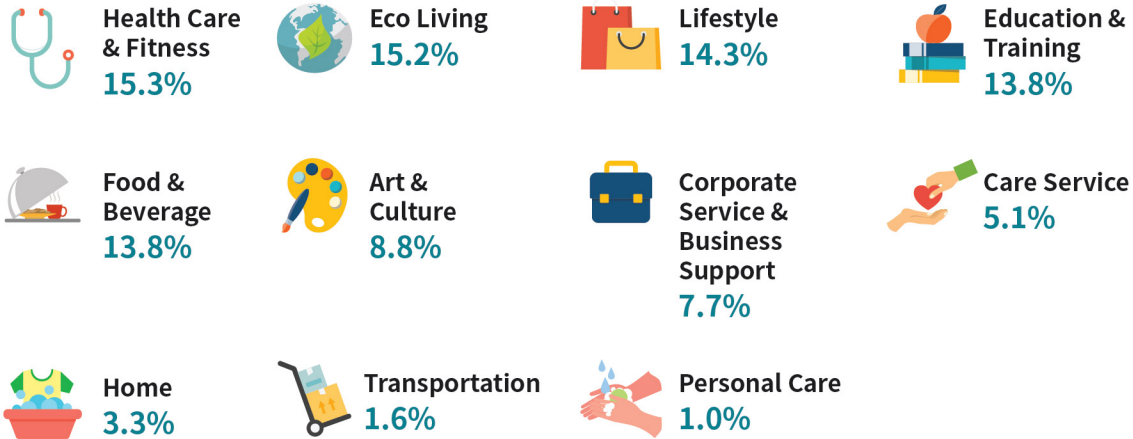


### Charitable Status and Tax Exemption of SEs' Mother Organisations



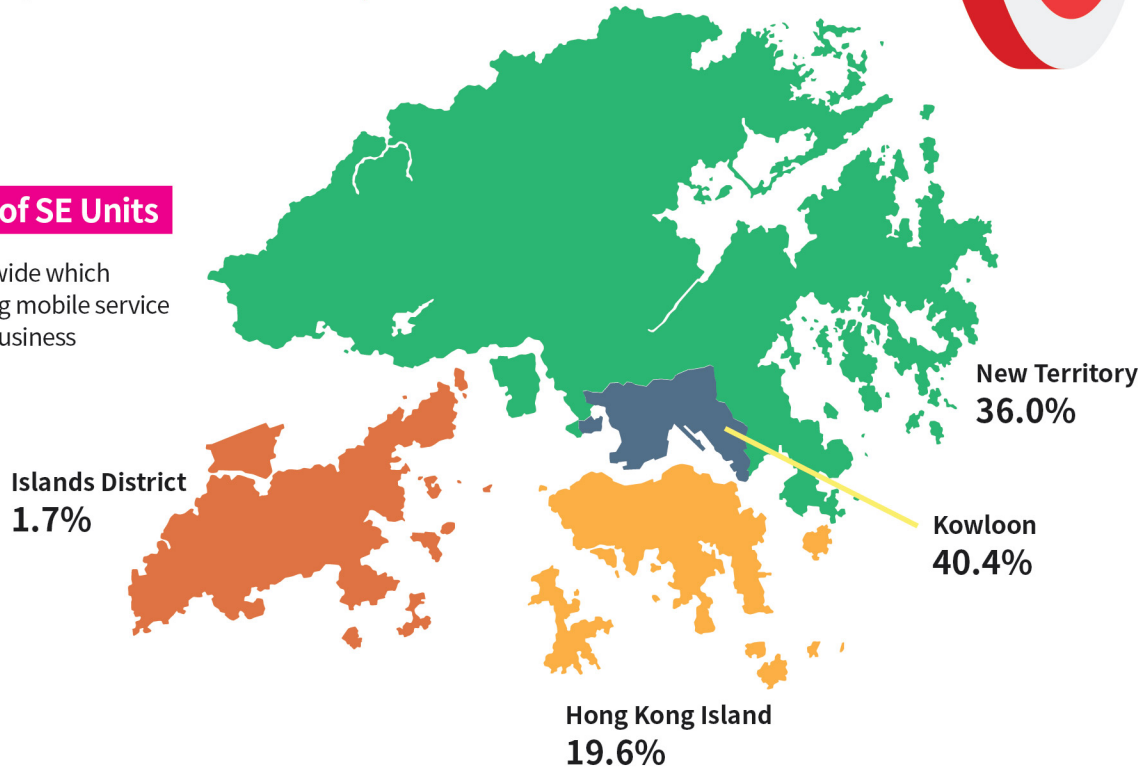
# 2021/22 SE Information

## Industrial Distribution of SE Units

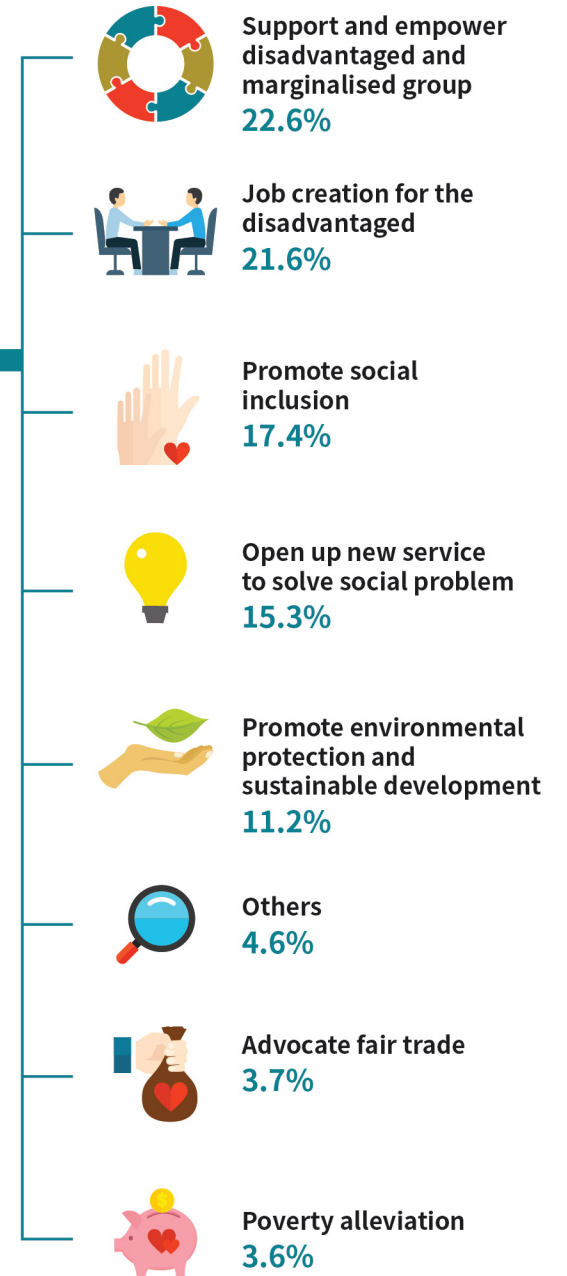


## Local Distribution of SE Units

\*2.4% refers to Territory-wide which the SE units are providing mobile service and conducting online business













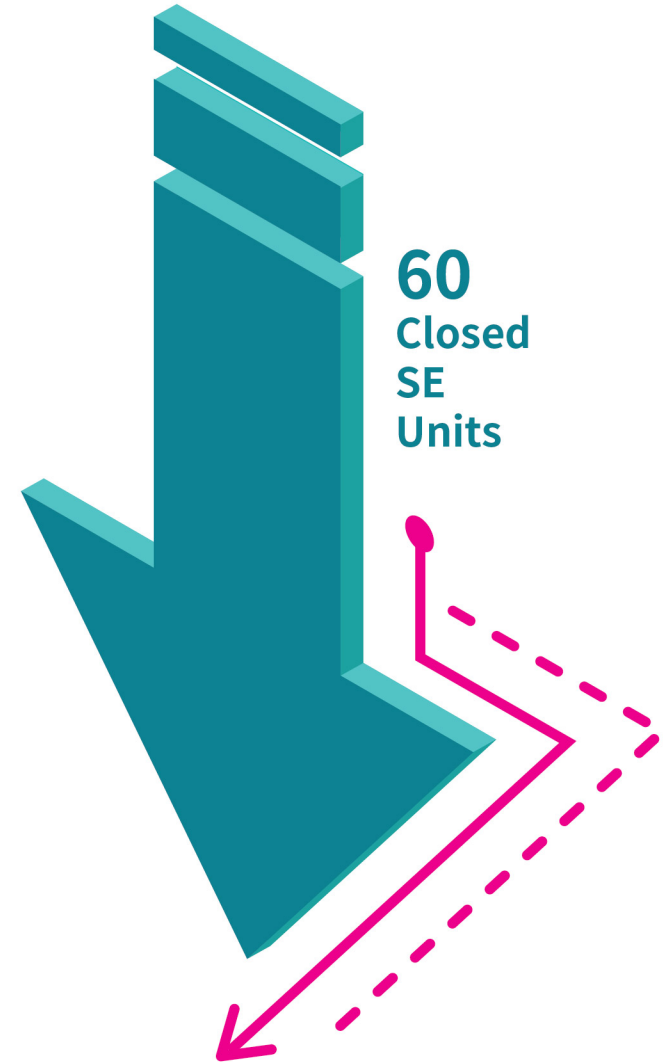
## Social Mission



# 2021/22 SE Business Trends

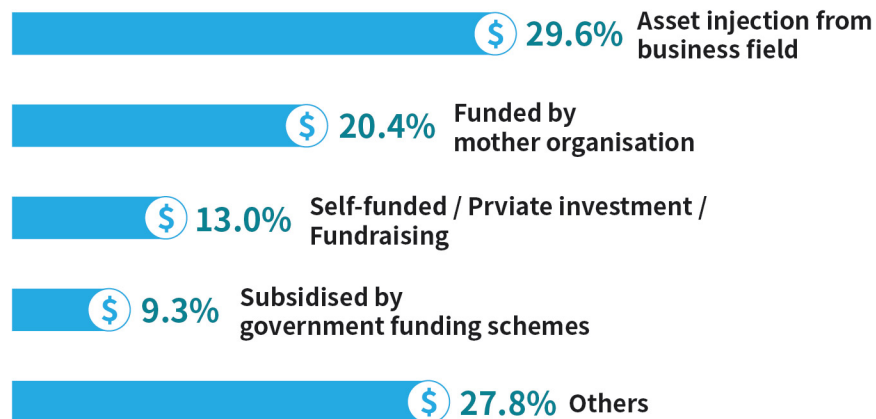
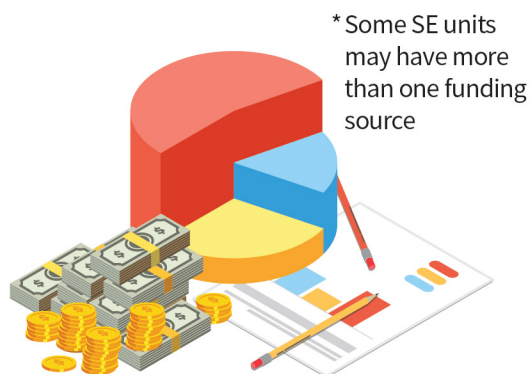


19.4%		Education & Training	16.7%
18.7%		Care Service	9.4%
15.7%		Health Care & Fitness	12.5%
13.4%		Eco Living	8.3%
9.0%		Art & Culture	6.3%
7.5%		Corporate Service & Business Support	3.1%
7.5%		Lifestyle	16.7%
5.2%		Food & Beverage	24.0%
3.0%		Home	1.0%
0.7%		Personal Care	2.1%

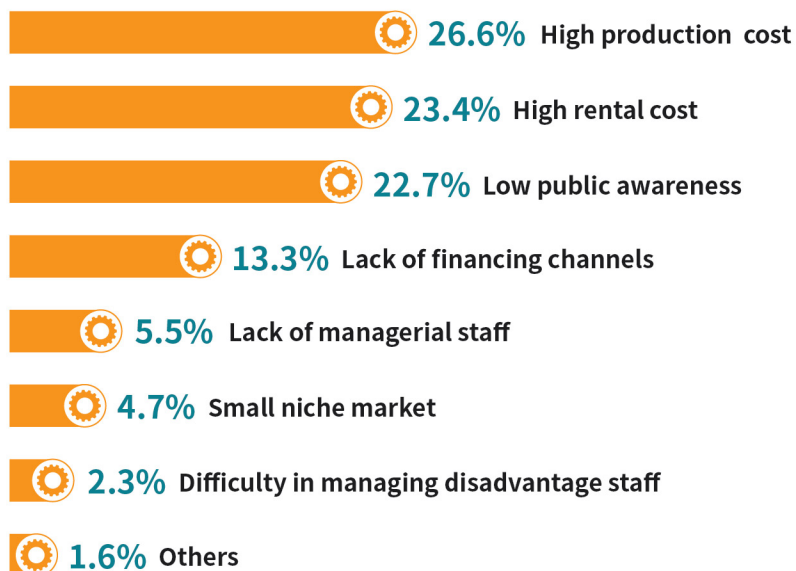


# About Newly Listed SE Units

## Funding Source of Newly Listed SE Units



## Common Operational Obstacles of Newly Listed SE Units



## The Most Helpful Measures for Newly Listed SE Units

